

How to install your Cordless Honeycomb Blind

#65101-10234-D

Required Tools

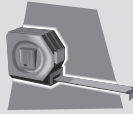


Inside Video



Outside Video

measuring
tape



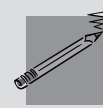
drill with
2mm bit



phillips bit or
screwdriver



pencil

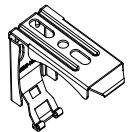


knife

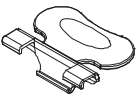


Included Hardware

The hardware can be found in the end of every box.



Installation
Bracket



Handle



Medium & Long
Screws for Wood



Wall Plugs for Brick
or Cement using
a 6mm bit
(if requested)



Wand
(if requested)

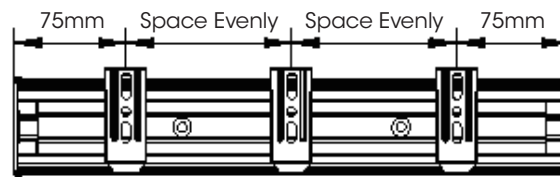
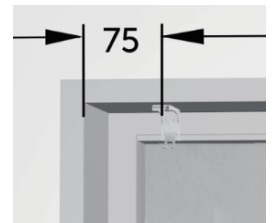
Child Safety

This product has no cord or chain and is safe for use around young children!

1 Installation Brackets

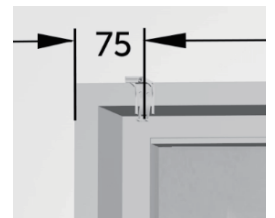
Installing inside the window frame...

- At top of window frame, measure 75mm in from each end and mark with a pencil; this is the centre of the outer brackets.
- Place brackets in position flush with the front of the window opening and mark where the screws will go.
- We recommend drilling pilot holes for the screws using a 2mm bit.
- Fix the brackets into position using 2 long screws for each bracket into the first two holes closest to the front of the bracket.
- If more brackets are supplied, space them evenly between the first two brackets.



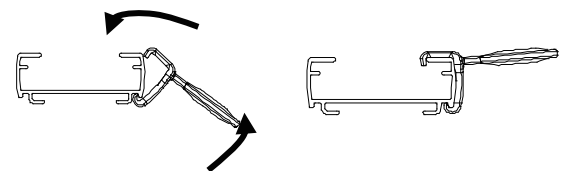
Installing outside the window frame...

- Measure 75mm in from top left and top right of where the blind will sit (normally edge of architrave) and mark where the screws will go.
- We recommend using a spirit level to align brackets if not installing on the architrave.
- We recommend drilling pilot holes for the screws using a 2mm bit.
- Fix the brackets into position using 2 long screws for each bracket.
- If more brackets are supplied, space them evenly between the first two brackets.



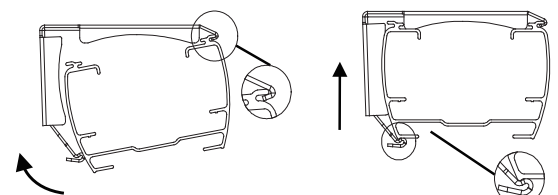
2 Attach Handle

- Attach the handle to the bottom rail as per diagram.



3 Install Blind

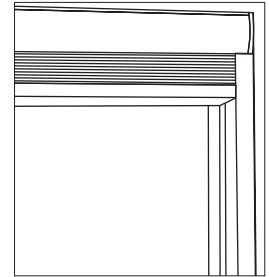
- Position the top front lip of the blind under the top front lip of the brackets.
- Push the blind up at the back to click into position as per diagram to the right.



Installation continued...

4 Install Light Guard (optional)

- The Light Guard is to be placed at the front and the back of the blind at either side as per image.
 - Note: all 4 Light Guards are identical.
 - Note: try to leave a 2mm gap between the blind (bottom rail) and the Light Guard to prevent scraping.
 - Note: use the double sided tape on the short side of the Light Guard to attach to the window frame.
-
- Place the front Light Guards in position and mark the edges with a pencil.
 - Remove the double sided tape and carefully place the Light Guard in position.
 - Place the rear Light Guards in position and mark the edges with a pencil.
 - Remove the double sided tape and carefully place the Light Guard in position.



Great Job... Enjoy your new Veneta Blinds!

Operating your
Blind

- Lower and raise the blind using the handle on the bottom rail.

Maintaining your
Blind

1 Dusting

- Dust can be removed using a feather duster or vacuum with brush attachment on low suction.

Feedback?

We would love to know how you went with your installation...

Please write a review on our website at...

www.venetablinds.com.au

2 Spot Cleaning

- Use a warm damp cloth or a mild detergent for tougher stains.
- Dab the affected area, but do not rub the fabric. Finish with just a warm damp cloth.
- Allow the fabric to dry in the lowered position.

3 Ultrasonic

- If ultrasonically cleaning the blind please specify that a mild solution must be used.
- Note the rails should never be immersed in liquid.

Need HELP?

Call our
Customer Service team
for assistance

1300 836 382